



## The Course-We-Can Constructor© (CWCC)

The ideal development, content management and publishing tool for all; no matter how skilled or inexperienced you are, the CWCC is an affordable, easily employable Learning Content Management System (LCMS) used to construct and develop Instructor-Led (IL) courseware and Rapid eLearning training material and documentation.

### Learning Content Management System

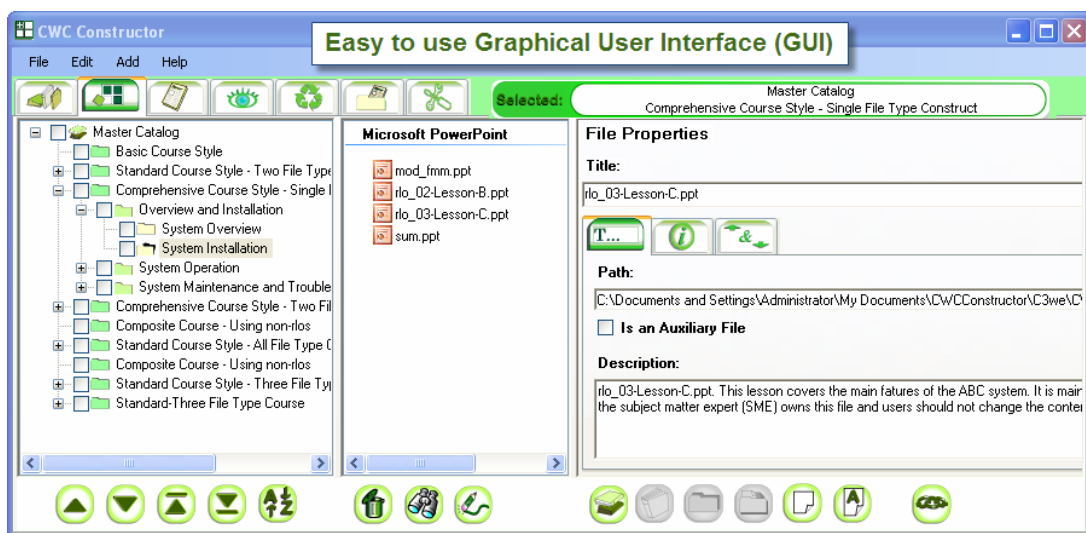
- Powerful, user-friendly, and affordable.
- Enables instructional developers, designers and trainers to produce course or document catalogs.
- Enables documentation to be quickly published and presented in a user-friendly format.
- You can seamlessly construct, edit, manage, maintain and publish either/or Microsoft PowerPoint®, Microsoft Word® and Adobe FrameMaker® courseware or documentation.
- Construct dual training courseware and presentations through centrally managed, repository-based, reusable learning objects or shared content objects (RLO and SCO)

### Publishing Tool

### Embedded Portable Document Format (PDF) printer

### Slide and presentation management Application

- The CWCC is easy to use
- The course and module properties fields used with professionally produced front matter material (fmm) files impose a discipline to courseware and document design and layout.
- Course and module objectives and summaries can be added dynamically through the easy to use Graphical User Interface (GUI).
- Create and publish courses, documentation and accompanying presentations effortlessly.
- Spawn other courses or documents from a single, or multiple course/document listing.
- Quickly customize and publish courseware, then create pdf print outputs for student handouts using the embedded PDF tool.



## CWCC Features

The CWCC enables instructional designers, developers and publishers to carry out the following functions:

- Quickly and effortlessly create catalogs, either in isolation or collectively, and have the ability to merge them into a single catalog at a later date.
- Import catalogs or individual courses into a working catalog.
- Create Instructor led courses, in Microsoft Word®, PowerPoint® and FrameMaker® or a combination of two or even all three. For example; create a Word® or FrameMaker® learning guide with accompanying PowerPoint® slideshow files using easy to follow guidelines.
- If you create all your Instructor led courseware in PowerPoint®, using slide and notes pages view, it is easy to convert the published output into web stream-able, self-paced courseware by converting PowerPoint® modules into an html or Adobe Flash® (.swf) format; using plug-ins like Adobe Presenter® or Articulate®. (known as Rapid eLearning Development)
- The CWCC allows you to publish your courseware or documents in the following outputs:
  - PowerPoint ®
  - Word®
  - FrameMaker®
  - PowerPoint® with Word®
  - PowerPoint® with FrameMaker®
  - PowerPoint®, Word® and FrameMaker®
- You also have the option to transfer your published output into printed, single file or merged .pdf files using the CWCC embedded PDF tool. This saves so much time and effort that you won't want to use the expensive Adobe Acrobat again.
- The CWCC can be used for:
  - Document publications (User guides, or technical practices etc.)
  - Slide presentation management.

### Create different course formats/types in any of these styles:

- **Basic course** – Used for short courses (between half and one and a half days in duration); this involves a construct container with Course Front Matter Material (FMM) + Lessons/RLO files and a summary file (all optional).
- **Standard course** – Used for medium duration courses (between one and a half to five days); this involves a construct container with Course FMM and Module containers. Each having module FMM and RLOs with a summary file within.
- **Comprehensive course** – Used for longer duration courses (between five to ten days, or even more); this involves a construct container with Course FMM and Section containers, each having Section FMM with Module containers within, which contain FMM, RLOs and Summary files.

### Catalog, course, module and file management and manipulation features:

- Open multiple catalogs at the same time in the same library listing.
- Copy or move courses, modules and files (rlos/fmm) between other catalogs and courses.
- Re-organize courses within catalogs alphanumerically or by using the up down rearrange buttons
- Import catalogs into other catalogs.
- Import courses from one catalog into another.
- The “Construction” feature gives you the ability to create new or open; catalogs, courses, sections, modules and files.
- Easily identify and re-establish broken links by folder or file selection on all files.
- Search/find files and add to containers under construction. To further enhance this feature users are advised to install Microsoft Desktop Search tool. This gives you a dynamic and extremely quick file and file content

search feature. You can obtain this by going to this link and downloading it for free:

<http://www.microsoft.com/windows/products/winfamily/desktopsearch/getitnow.msp>

- Review files before publishing by using the built in html browser window. This negates having to open the file.
  - Manage and edit source files like a typical LCMS. This is where you can use the application to open, edit and save files within your repository. Thereby use it to manage all source files from within the one environment.
  - Manage published courses and documents from within the CWCC GUI
  - The ability to "ensure even page count" at all levels of concatenation on publish.
  - Automatic table of contents (TOC) additions checks for even/odd page count and counters odd page count with a blank page automatically.
  - Automatic navigation button to take you to the published folder after publication is complete.
  - All publish and print to pdf progress is visible in the application.
  - Dynamic properties boxes for catalog, course, section and module levels.
  - Automatic identity of "auxiliary\*" (Aux) files (these are non-constructable file formats such as .swf, .pdf .xls etc.) and copy them into the published course or document folder.
  - Dual publication of different types of course files - Two file types; i.e. when you publish a Word® course and drop in an accompanying PowerPoint® slide show set of files into the course or module container, both will be named and published with the same details, and in synch.
  - Publish multiple courses at the same time – Select multiple courses from your catalog and publish at the same time. Or deselect individual modules and publish as a single output. This helps when you have a stock of printed documents and only a module has changed. You can publish, then print the edited module and replace the outdated module in the stock copies.
  - Ability to halt publishing once it is started.
  - File type recognition – the ability to show files by type .ppt, .doc, .fm and Aux.
  - Create custom variables and assign them to catalogs. This allows you to place specific variable prompts within your documents that will get replaced on publish with pre-arranged text.
  - Maintain an audit registry of all actions carried out on catalogs. Catalog owners, with the additional security protection provided, can see all actions that have been carried out in relation to changes, such as edit, adding, deleting or moving of items and content within the catalog. These changes are tracked by item, action, computer/name, date and time. This is an enable/disable feature. If the catalog owner does not wish to lock down the audit feature, then all users can see the audit history page and delete entries (not advised).
  - Statistics. Users can see instantly by visual graphic display, how many times files are used within the catalog. This gives a dynamic indication of re-use utilization.
  - Catalog lockdown feature. The catalog owner can dictate if the catalog is assigned a password. If a password is assigned to the catalog and the catalog is locked down, then users do not get the ability to add, change or edit course entries, except for the ability to publish only.
  - Course lockdown feature. The same restrictions as catalog lockdown apply, where no changes or edits can be carried out on a locked course except for the ability to publish only.
  - Catalog and course print options. Users have the ability print the catalog listing and individual course listings on requirement.
  - Dynamic header and footer assignment ability. You can dictate what the headers and footers are and to what level they are assigned using Word® and PowerPoint®. This feature allows the overwriting of already applied headers and footers on files, thus enabling the use of unprepared files in the construction of courses or documents.
- **Ask for a demonstration, either on site or through a webinar type portal.**
  - **Course We Can Ltd will gladly help you to create stylish front matter material and RLO/SCO templates.**
  - **Contact us now (details below)**

Course We Can, Ltd. All rights reserved. Course-We-Can Constructor © 2007-8 All other names, products, and services mentioned are the trademarks or registered trademarks of their respective owners. The information contained in this document is believed to be accurate in all respects but is not warranted by Course We Can, Ltd. The information is subject to change without notice and should not be construed in any way as a commitment by Course We Can, Ltd., or any of its affiliates or subsidiaries. Course We Can, Ltd., and its affiliates or subsidiaries assume no responsibility for any errors or omissions in this document. Revisions or new editions of this document may be issued to incorporate such changes.

Course We Can Ltd  
 Telephone: +1 613 839 1352  
 Fax : +1 613 839 1352  
 EMAIL: cwccsupport@course-we-can.com

